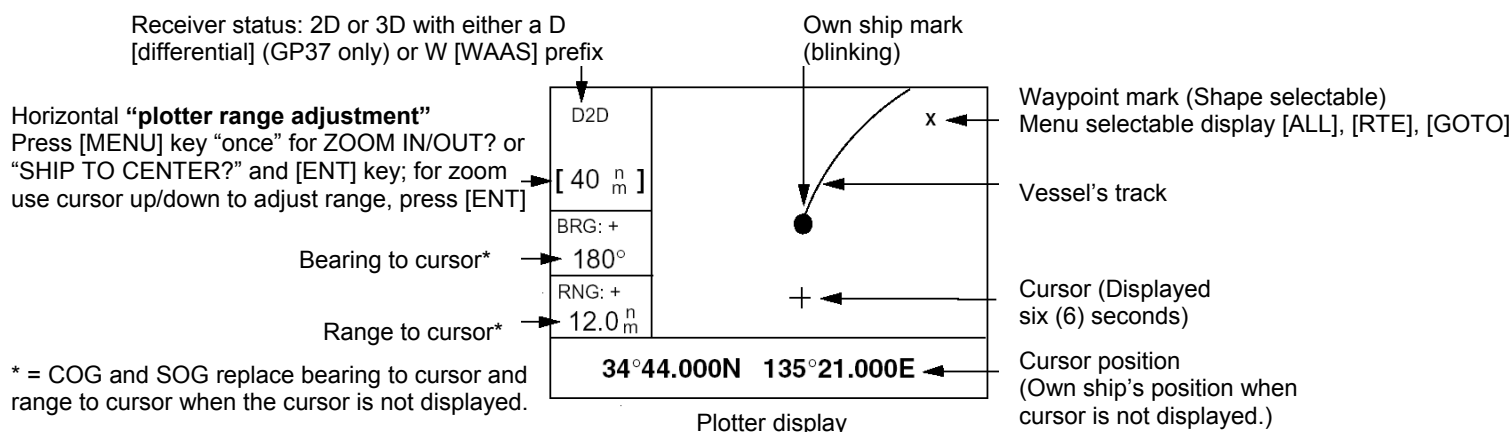


GP32/37 Operations and Information Quick Guide

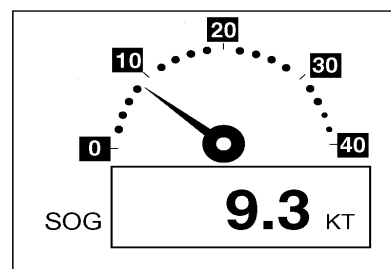
Specifications: 12-24 VDC, 340 ma (max), settling time ~12 sec's (90 sec's initial), accuracy (95%) ~5-7 m, 1-3m w/WAAS or DGPS



User display (digital)		
Selectable sentences (example shown right)		
NONE	ODO	TRIP
TIME	POSN	POWER
SOG	COG	WPT
XTE	TTG	ETA
Press [MENU] until "MAIN MENU" appears Select "USER DISP" and follow prompts		

POWER(V)	SOG(KT)
12.1	9.9
TRIP(NM)	COG(°)
9.99	5.6

User display (digital)



User display (speedometer)

Keypad Operations:

CURSOR PAD - Shifts cursor (cursor displayed) and display (with cursor off)

- Selects items on menus
- Enters alphanumeric data

MENU - "MAIN MENU" press once (twice when in "plotter" or "high way" screen)

- [Plotter screen only] press once to "Zoom" or "Ship to center" also use to escape current function

DISP - Chooses display mode (press until desired mode is displayed)

ENT - Confirms menu selection and entered information

GOTO - Sets/cancels destination (press and select function from menu options)

MARK/MOB - Momentary press: Creates mark (waypoint)

- Long press: Creates MOB (Man Over Board) can edit or replace with new position (cannot erase)

DIM/PWR - Momentary press: Turns power "on", press for brilliance and contrast, use cursor pad to adjust

- Long press: Turns power "off" (after three second count down)

Waypoint Operations: (total of: 999 waypoints with comments)

• Entering a waypoint with the cursor

1. Use cursor pad to move cursor to desired location
2. Press the [ENT] key, then follow screen prompts

• Entering a waypoint at "own ship's" position

1. Press the [MARK/MOB] key, then follow screen prompts

• Entering a waypoint from the waypoint list

1. Press [MENU] until "MAIN MENU" appears
2. Select "WAYPOINT" using the "cursor pad" and press [ENT] key
3. Choose "List" (complete) or "Nearest" (closest 35 waypoints from present location), press [ENT] key
4. Follow screen prompts using cursor pad to edit and/or add information, confirm using the [ENT] key

Route Operations: (total of: 50 routes with 30 waypoints each)

- **Creating a route with “cursor” (using “LOG RTE” function)**
 1. Use cursor pad to move cursor to desired location (shown at bottom of screen), press [ENT]
 2. Use cursor pad to edit waypoint name and press [ENT] to display waypoint information screen
 3. Use cursor pad to edit any additional information, then select [LOG RTE?] and press [ENT]
 4. Repeat steps 1 – 3 for additional waypoints (total of 30), selecting [LOG RTE?] before pressing [ENT]
 5. See GOTO operations below for navigating using a route
- **Creating a route with the “route menu”**
 1. Press [MENU] until “MAIN MENU” appears, select “ROUTE” using the cursor pad, press [ENT]
 2. “NEW?” is selected; press the [ENT] key. New route screen is displayed, press [ENT] to add waypoints
 3. Use the cursor pad to select appropriate waypoint and press the [ENT] key
 4. Repeat step 3 to select additional waypoints (total of 30)
 5. When finished adding waypoints use the cursor pad to select [EXIT?] and press the [ENT] key
- **Creating a route with the “waypoint list”**
 1. Press [MENU] until “MAIN MENU” appears
 2. Select “WAYPOINTS” using the cursor pad, press [ENT] key
 3. Choose “List” (complete) or “Nearest” (closest 35 waypoints from present location), press [ENT] key
 4. Select a waypoint, then press [ENT] key, use the cursor pad to select [LOG RTE?], press [ENT] key
 5. Repeat step 4 to add additional waypoints until route completed
 6. Press [MENU] (once only)
 7. Select “ROUTE” from “main menu” using the cursor pad and press [ENT] key
 8. Select [LOG] using the cursor pad and press [ENT]; “MOVE?” is selected, press [ENT] twice
- **Creating “track based” route manually**
 1. Press the [MARK/MOB] momentarily, edit waypoint if required, select [LOG RTE?], press [ENT]
 2. Repeat step 1 at course change or any other interval required
 3. When finished adding waypoints, press [MENU] key twice and select “ROUTES”, press [ENT]
 4. Select “LOG” and press [ENT]; “MOVE?” is selected, press [ENT] twice
- **Creating “track based” route automatically** (position saved sequentially, display shows “saved”, beep sounds)
 1. Press [MENU] until “MAIN MENU” appears
 2. Select “ROUTES” using the cursor pad, press [ENT] key
 3. Use cursor pad and [ENT] to select “INTERVAL:” TIME or DISTANCE (select appropriate values)
 4. Use cursor pad to select “VOYAGE ROUTE” and press [ENT]
 5. Select “START” and press [ENT], press the [MENU] key twice to finish (or message after 30 saved)
 6. When finished adding waypoints, press [MENU] key twice and select “ROUTES”, press [ENT]
 7. Select “LOG” and press [ENT]; “MOVE?” is selected, press [ENT] twice

GOTO Operations: Navigating to a waypoint, route or cursor

- **Press [GOTO] key, select from the following using the cursor pad and confirm using [ENT] key**
 - WPT-LIST? Destination by “list” (complete), select desired waypoint and press [ENT]
 - WPT-NEAR? Destination by “near” (closest 35), select desired waypoint and press [ENT]
 - ROUTE? Destination by “route” select desired route and press [ENT]
 - CURSOR? Destination by “cursor” (?) mark appears, move cursor to location, press [ENT]
 - - - - - -? * Location of user waypoint (example “HOME”), select and press [ENT] to confirm
 - OFF? Stops all waypoint or route navigation functions
 - SETUP? * Used to set “User Waypoint”, select from waypoint list and press [ENT]

Position Display Format: XX.XXX' (decimal), XX'XX.X' (minutes/seconds), LC TD (Loran C “TD'S)

- Press [MENU] until “MAIN MENU” appears, select TD SETUP, press [ENT], select format, press [ENT]
 - TD setup requires selecting the “GRI” and “TD” set closest to but under the local area TD numbers
 - Example: Local numbers (GRI area 7980) 14445.6 & 45535.6, set “TD SETUP” to GRI: 7980 11-43
 - Use TD1 and TD2 offsets to correct difference between “known” TD position and displayed position